

Test Report

00155000-Grey Duck Down EN 90/10,
Class 1,

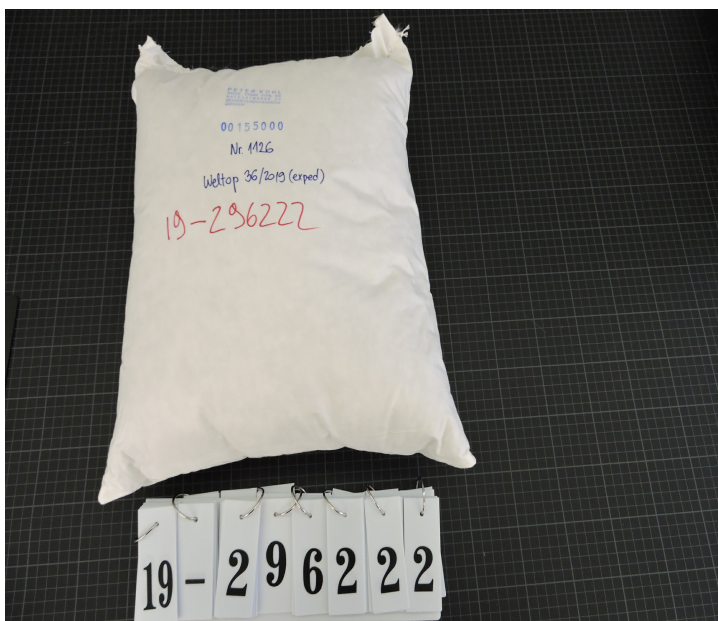
IDFL # 19-296222

Mon 30 Sept. 2019

Germany

Arrival Date: 1-Day
Fri 27 Sept. 2019
Report Date: Mon 30 Sept. 2019

Sample Type: Plumage
Shipped By: DHL 5544800030
Sample Identification: 00155000-Grey Duck Down EN 90/10, Class 1, F/P 700
S/C Weltop 36-2019 (Exped)



SN EN ISO/EC 17025:2005

¹ SAS Accredited

This analysis represents (within normal testing variances) the test results from the sample(s) submitted. The analysis may not represent the entire lot, batch or production run. In no event shall IDFL be responsible or liable for any direct, indirect, punitive, incidental, special, or consequential damages whatsoever arising out of or connected with the use of, misuse of, or reliance upon such results or analysis. This test report is subject to the Terms and Conditions found at www.idfl.com.

IDFL LABORATORY AND INSTITUTE

IDFL SALT LAKE

1455 South 1100 East
Salt Lake City, UT 84105
USA
+1 801 467 7611
info@idfl.com

IDFL EUROPE AG

Zürcherstrasse 282
CH-8500 Frauenfeld
Switzerland
+41 52 765 1574
europe@idfl.com

IDFL CHINA

Tonghui Mid-Road 688, Xiaoshan
Hangzhou Zhejiang 311200
China
+86 571 8273 6561
china@idfl.com

IDFL TAIPEI

2F., No. 163 Sec. 2, Wenhua Rd.
Banqiao District, New Taipei City
Taiwan
+886 2 2259 1178
taiwan@idfl.com

Approved By

www.idfl.com

Client 95

CH

Sample 1 of 1

Page 1 of 3



Test Report

00155000-Grey Duck Down EN 90/10,
Class 1,

IDFL # 19-296222

Mon 30 Sept. 2019

Test Orders Summary

Test	Test Component	Result	Expected Value
Content EN 12131 2018	Down Clusters	82.1%	-
Steam Fill Power IDFB Part 10-B 2015	Final Fill Power Volume	731 in ³ /30g	-

SN EN ISO/EC 17025:2005

¹ SAS Accredited

This analysis represents (within normal testing variances) the test results from the sample(s) submitted. The analysis may not represent the entire lot, batch or production run. In no event shall IDFL be responsible or liable for any direct, indirect, punitive, incidental, special, or consequential damages whatsoever arising out of or connected with the use of, misuse of, or reliance upon such results or analysis. This test report is subject to the Terms and Conditions found at www.idfl.com.

IDFL LABORATORY AND INSTITUTE

IDFL SALT LAKE
1455 South 1100 East
Salt Lake City, UT 84105
USA
+1 801 467 7611
info@idfl.com

IDFL EUROPE AG
Zürcherstrasse 282
CH-8500 Frauenfeld
Switzerland
+41 52 765 1574
europe@idfl.com

IDFL CHINA
Tonghui Mid-Road 688, Xiaoshan
Hangzhou Zhejiang 311200
China
+86 571 8273 6561
china@idfl.com

IDFL TAIPEI
2F., No. 163 Sec. 2, Wenhua Rd.
Banqiao District, New Taipei City
Taiwan
+886 2 2259 1178
taiwan@idfl.com

Approved By

www.idfl.com
Client 95
CH
Sample 1 of 1
Page 2 of 3

Test Report

00155000-Grey Duck Down EN 90/10,
Class 1,

IDFL # 19-296222

Mon 30 Sept. 2019

Content EN 12131 2018¹

Down Clusters	82.1%
Down Fibers	3.3%
Waterfowl Feather Fibers	3.1%
Waterfowl Feathers	10.6%
Broken and Damaged Waterfowl Feathers	0.4%
Quill	0.0%
Landfowl	0.2%
Residue	0.3%
Total	100.0%

Result(s) Used for Evaluation

Total Down	85.4%
Down Fiber Allowance (3.3%) + Down Clusters (82.1%)	
Total Waterfowl Feathers	11.6%
Waterfowl Feather Fibers & Broken and Damaged Waterfowl Feathers Allowance (1.0%) + Waterfowl Feathers (10.6%)	
Other Elements	3.0%
Excess Down Fiber (0.0%) + Excess Waterfowl Feather Fibers & Broken and Damaged Waterfowl Feathers (2.5%) + Landfowl (0.2%) + Residue (0.3%) + Quill (0.0%)	

Steam Fill Power IDFB Part 10-B 2015¹

Height	184 mm/30g
Volume	731 in ³ /30g

SN EN ISO/EC 17025:2005

¹ SAS Accredited

This analysis represents (within normal testing variances) the test results from the sample(s) submitted. The analysis may not represent the entire lot, batch or production run. In no event shall IDFL be responsible or liable for any direct, indirect, punitive, incidental, special, or consequential damages whatsoever arising out of or connected with the use of, misuse of, or reliance upon such results or analysis. This test report is subject to the Terms and Conditions found at www.idfl.com.

IDFL LABORATORY AND INSTITUTE

IDFL SALT LAKE
1455 South 1100 East
Salt Lake City, UT 84105
USA
+1 801 467 7611
info@idfl.com

IDFL EUROPE AG
Zürcherstrasse 282
CH-8500 Frauenfeld
Switzerland
+41 52 765 1574
europe@idfl.com

IDFL CHINA
Tonghui Mid-Road 688, Xiaoshan
Hangzhou Zhejiang 311200
China
+86 571 8273 6561
china@idfl.com

IDFL TAIPEI
2F., No. 163 Sec. 2, Wenhua Rd.
Banqiao District, New Taipei City
Taiwan
+886 2 2259 1178
taiwan@idfl.com

Approved By

www.idfl.com
Client 95
CH
Sample 1 of 1
Page 3 of 3