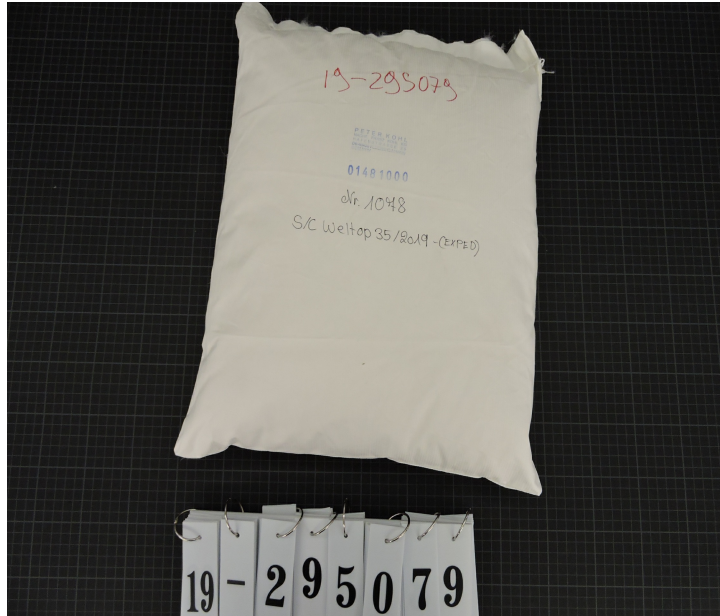


Germany

3-Day
Arrival Date: Fri 6 Sept. 2019
Report Date: Wed 11 Sept. 2019

Sample Type: Plumage
Shipped By: DHL 3379602461
Sample Identification: 01481000-White Goose Down 90/10 US-Standard, F/P 850cuin
S/C Welpop 35/2019 (Exped)



SN EN ISO/EC 17025:2005

¹ SAS Accredited

This analysis represents (within normal testing variances) the test results from the sample(s) submitted. The analysis may not represent the entire lot, batch or production run. In no event shall IDFL be responsible or liable for any direct, indirect, punitive, incidental, special, or consequential damages whatsoever arising out of or connected with the use of, misuse of, or reliance upon such results or analysis. This test report is subject to the Terms and Conditions found at www.idfl.com.

IDFL LABORATORY AND INSTITUTE

IDFL SALT LAKE
1455 South 1100 East
Salt Lake City, UT 84105
USA
+1 801 467 7611
info@idfl.com

IDFL EUROPE AG
Zürcherstrasse 282
CH-8500 Frauenfeld
Switzerland
+41 52 765 1574
europe@idfl.com

IDFL CHINA
Tonghui Mid-Road 688, Xiaoshan
Hangzhou Zhejiang 311200
China
+86 571 8273 6561
china@idfl.com

IDFL TAIPEI
2F., No. 163 Sec. 2, Wenhua Rd.
Banqiao District, New Taipei City
Taiwan
+886 2 2259 1178
taiwan@idfl.com



Approved By

www.idfl.com

Client 95

CH

Sample 3 of 7

Page 1 of 3



Test Report

IDFL # 19-295079

01481000-White Goose Down 90/10

Wed 11 Sept. 2019

Test Orders Summary

Test	Test Component	Result	Expected Value
Content IDFB Part 3 2013	Down Clusters	90.6%	91
Species Down & Feathers IDFB Part 12 2013	Total Goose	98%	-
	Total Duck	2%	-
Steam Fill Power IDFB Part 10-B 2015	Final Fill Power Volume	850 in ³ /30g	860

SN EN ISO/EC 17025:2005

¹ SAS Accredited

This analysis represents (within normal testing variances) the test results from the sample(s) submitted. The analysis may not represent the entire lot, batch or production run. In no event shall IDFL be responsible or liable for any direct, indirect, punitive, incidental, special, or consequential damages whatsoever arising out of or connected with the use of, misuse of, or reliance upon such results or analysis. This test report is subject to the Terms and Conditions found at www.idfl.com.

IDFL LABORATORY AND INSTITUTE

IDFL SALT LAKE
1455 South 1100 East
Salt Lake City, UT 84105
USA
+1 801 467 7611
info@idfl.com

IDFL EUROPE AG
Zürcherstrasse 282
CH-8500 Frauenfeld
Switzerland
+41 52 765 1574
europe@idfl.com

IDFL CHINA
Tonghui Mid-Road 688, Xiaoshan
Hangzhou Zhejiang 311200
China
+86 571 8273 6561
china@idfl.com

IDFL TAIPEI
2F., No. 163 Sec. 2, Wenhua Rd.
Banqiao District, New Taipei City
Taiwan
+886 2 2259 1178
taiwan@idfl.com

Approved By
www.idfl.com
Client 95
CH
Sample 3 of 7
Page 2 of 3

Content IDFB Part 3 2013¹

Down Clusters	90.6%
Down Fibers	3.6%
Waterfowl Feather Fibers	0.9%
Waterfowl Feathers	4.5%
Broken and Damaged Waterfowl Feathers	0.2%
Quill	0.0%
Landfowl	0.0%
Residue	0.2%
Total	100.0%

Species Down & Feathers IDFB Part 12 2013¹

Goose Down	98%
Duck Down	2%
Goose Feathers	100%
Duck Feathers	0%
Total Goose	98%
Total Duck	2%

Steam Fill Power IDFB Part 10-B 2015¹

Volume	850 in ³ /30g
--------	--------------------------

SN EN ISO/EC 17025:2005

¹ SAS Accredited

This analysis represents (within normal testing variances) the test results from the sample(s) submitted. The analysis may not represent the entire lot, batch or production run. In no event shall IDFL be responsible or liable for any direct, indirect, punitive, incidental, special, or consequential damages whatsoever arising out of or connected with the use of, misuse of, or reliance upon such results or analysis. This test report is subject to the Terms and Conditions found at www.idfl.com.



IDFL LABORATORY AND INSTITUTE

IDFL SALT LAKE
1455 South 1100 East
Salt Lake City, UT 84105
USA
+1 801 467 7611
info@idfl.com

IDFL EUROPE AG
Zürcherstrasse 282
CH-8500 Frauenfeld
Switzerland
+41 52 765 1574
europe@idfl.com

IDFL CHINA
Tonghui Mid-Road 688, Xiaoshan
Hangzhou Zhejiang 311200
China
+86 571 8273 6561
china@idfl.com

IDFL TAIPEI
2F., No. 163 Sec. 2, Wenhua Rd.
Banqiao District, New Taipei City
Taiwan
+886 2 2259 1178
taiwan@idfl.com

Approved By
www.idfl.com
Client 95
CH
Sample 3 of 7
Page 3 of 3